

'ib' 'id' 'ig' 'im' Book



Native-speaking English Teacher Section
Curriculum Development Institute
Education Bureau
Hong Kong Special Administrative Region (HKSAR)

Published edition © Education Bureau, HKSAR Publishing 2008
First published April 2008
Second print September 2009
Third print April 2010

Duplication of pages of the publication is restricted to non-profit making educational purposes only and proper acknowledgements should be made. Otherwise, no part of this publication may be produced, stored in a retrieval system or transmitted in any form or by any means without the prior permission of the Hong Kong Special Administrative Region.

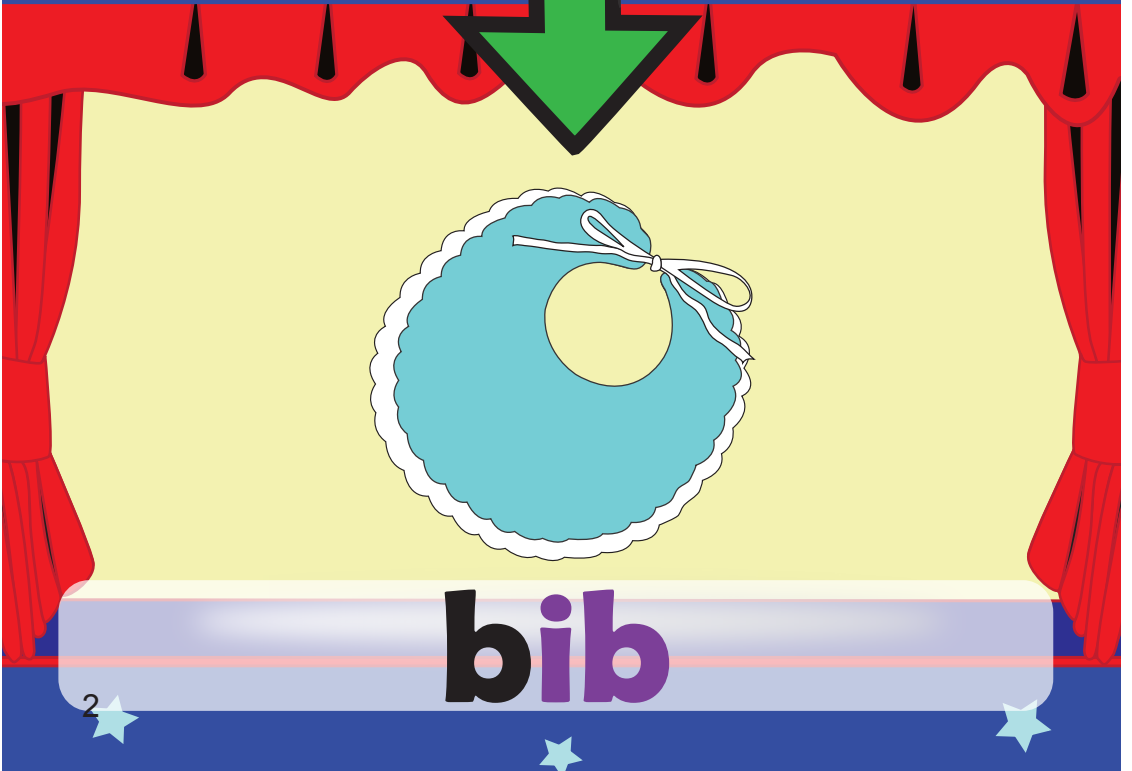
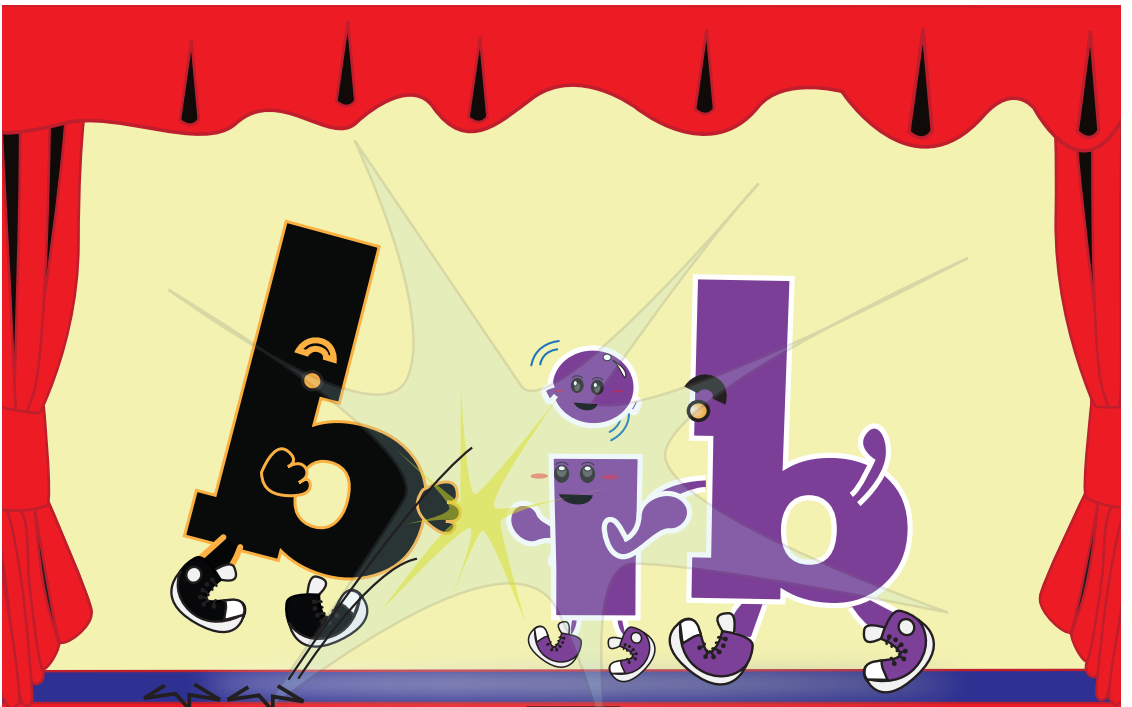
ISBN 978-988-8019-43-4

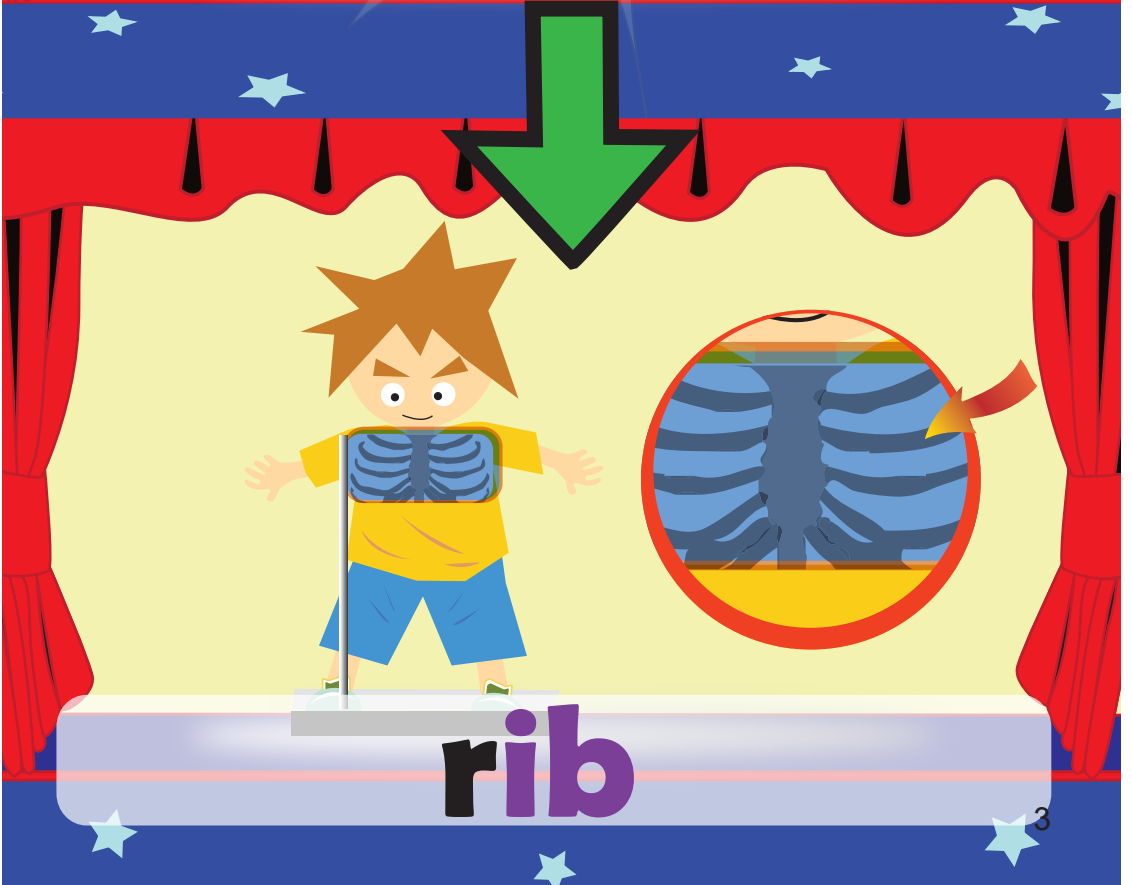
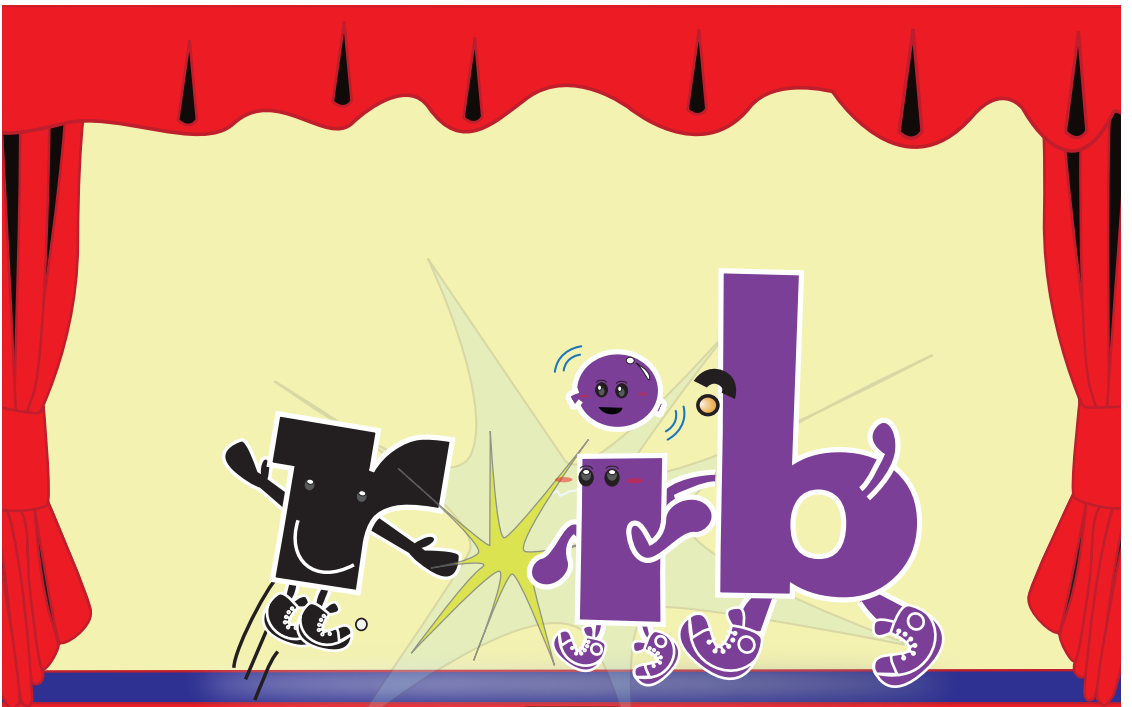
Acknowledgements

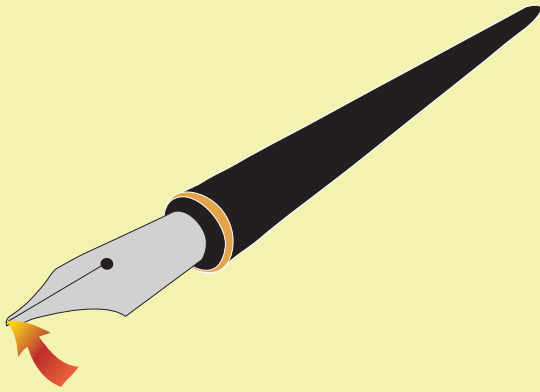
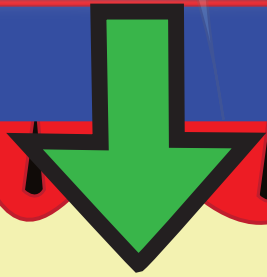
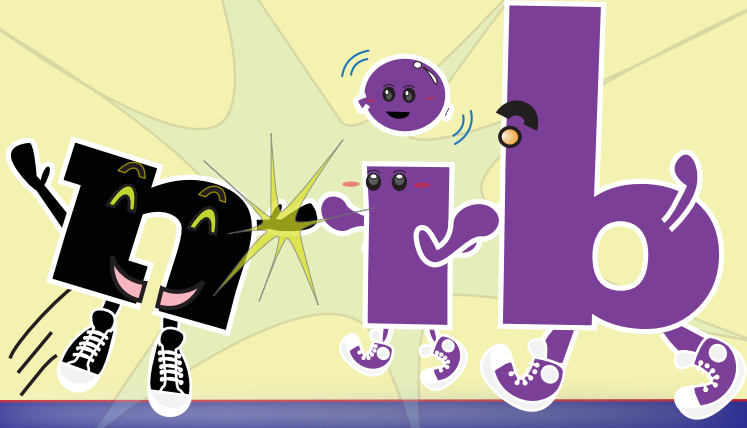
We are most grateful to the PLP-R/W Committee for the story in this publication.

We would like to express our sincere gratitude to Kitty Wong and Calvin Cheung for producing the illustrations of the story in this publication.

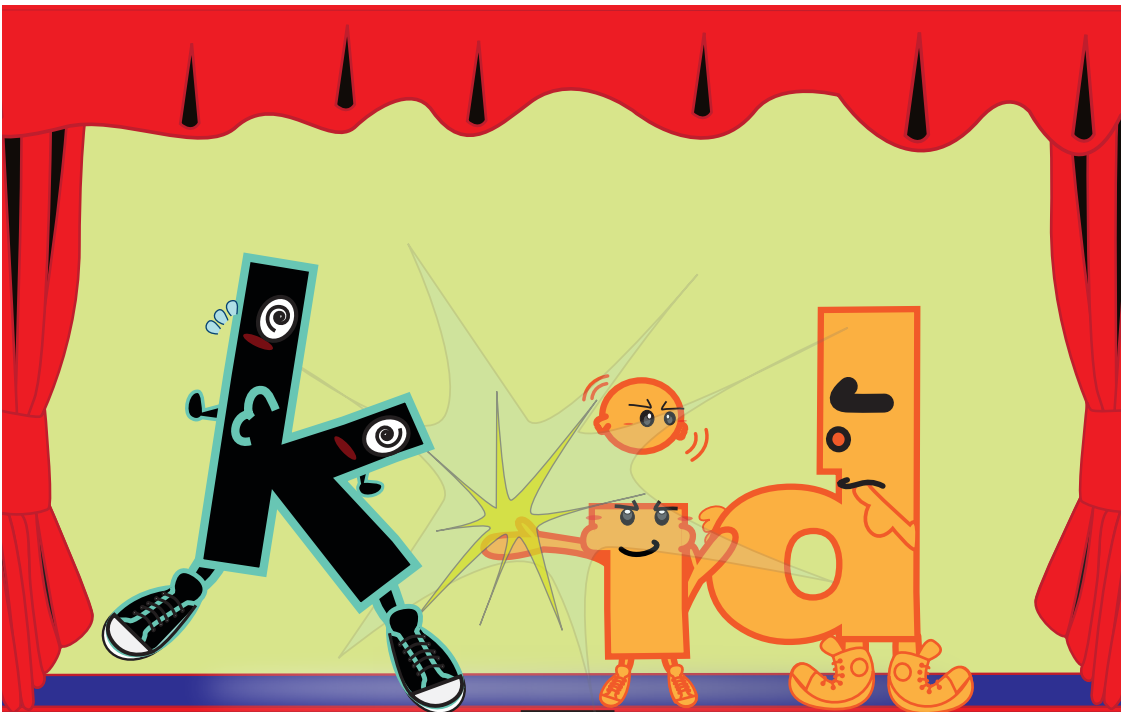
ib
id
ig
im



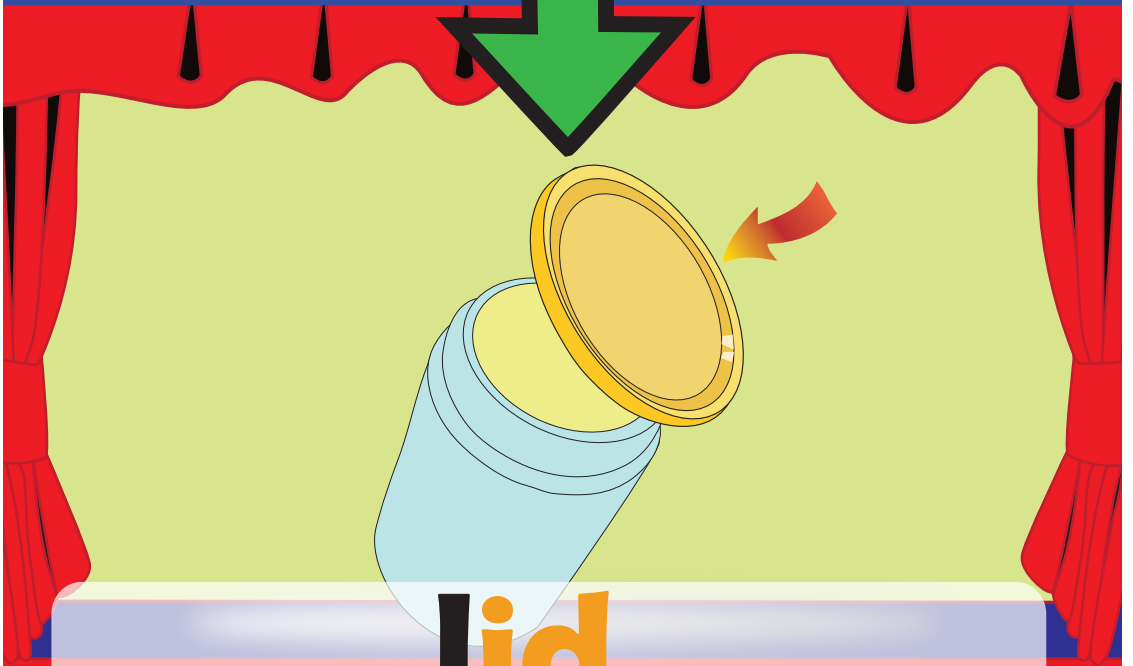
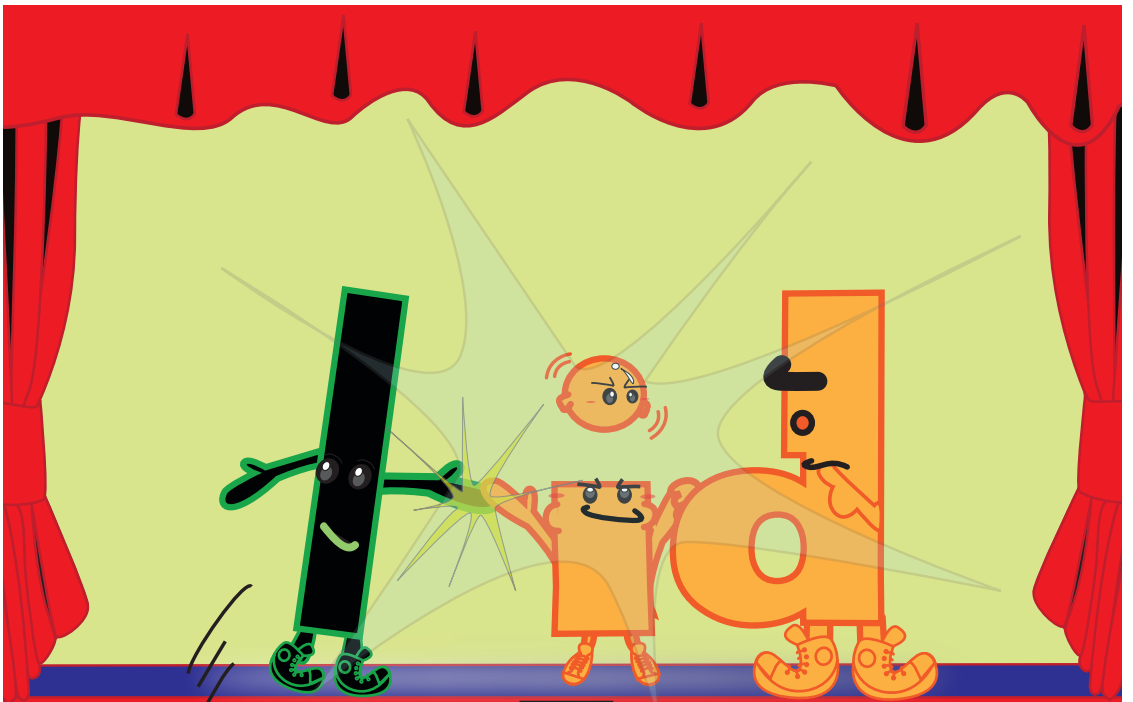




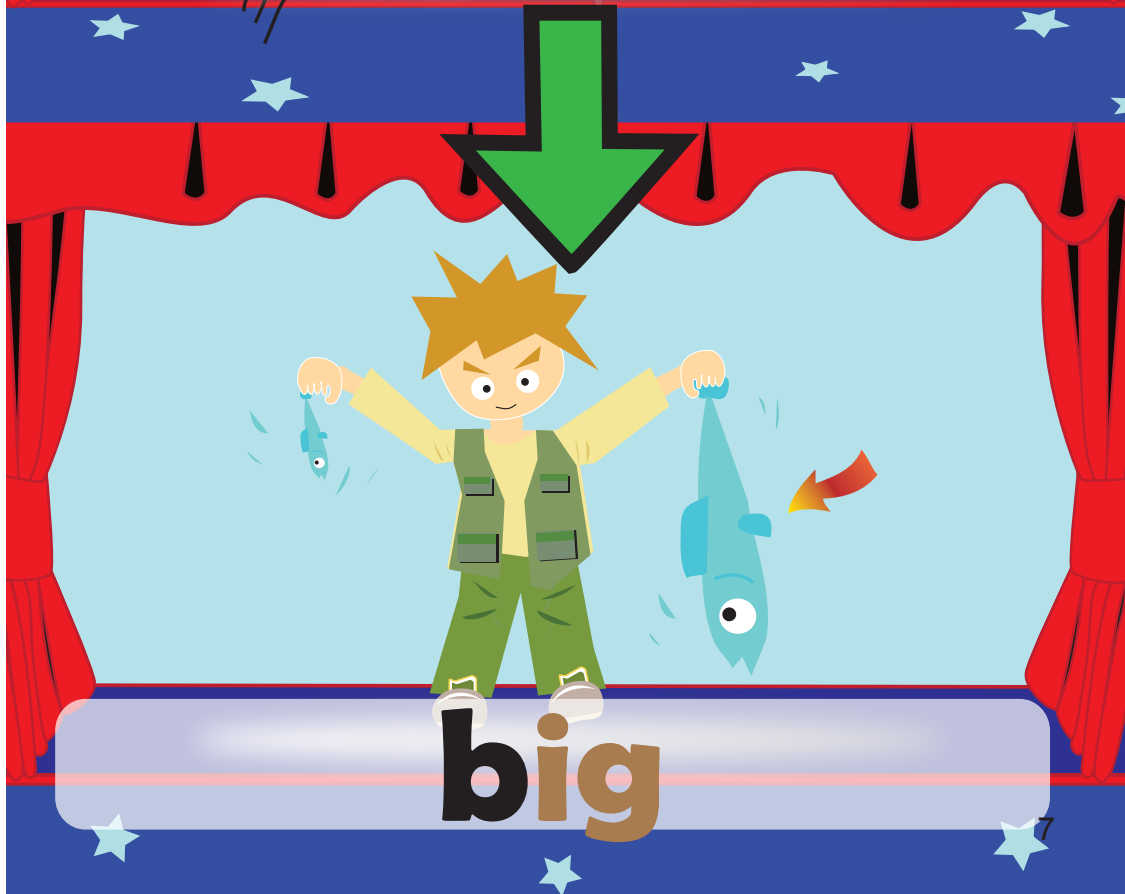
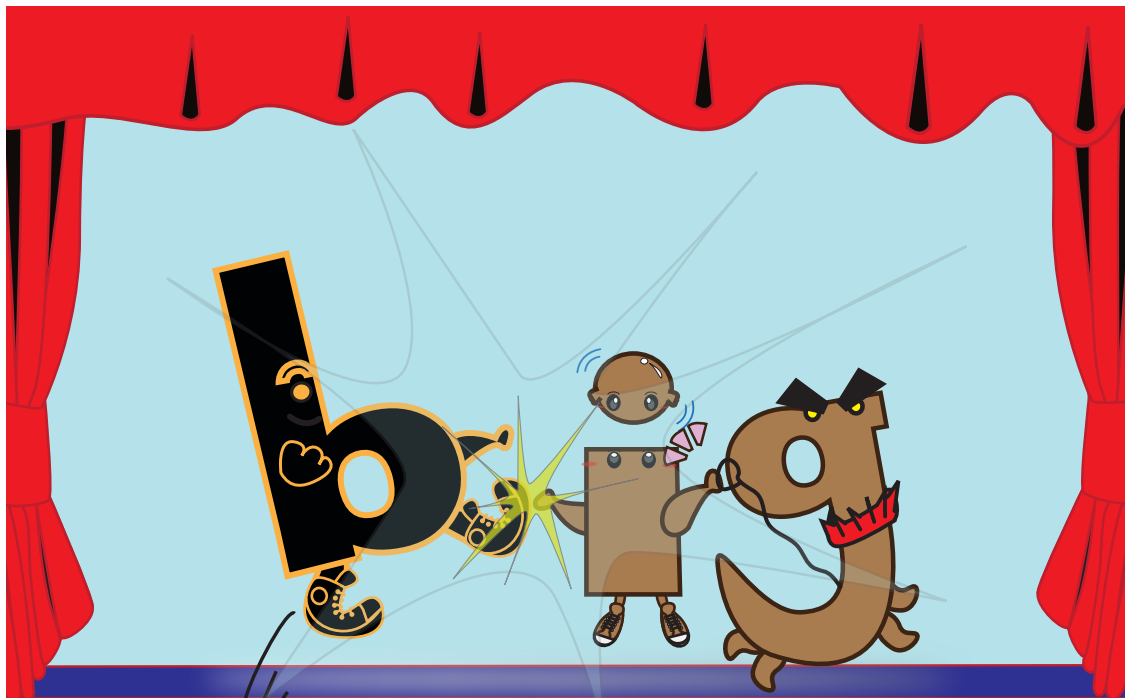
nib

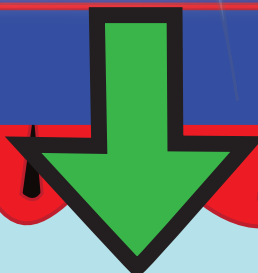


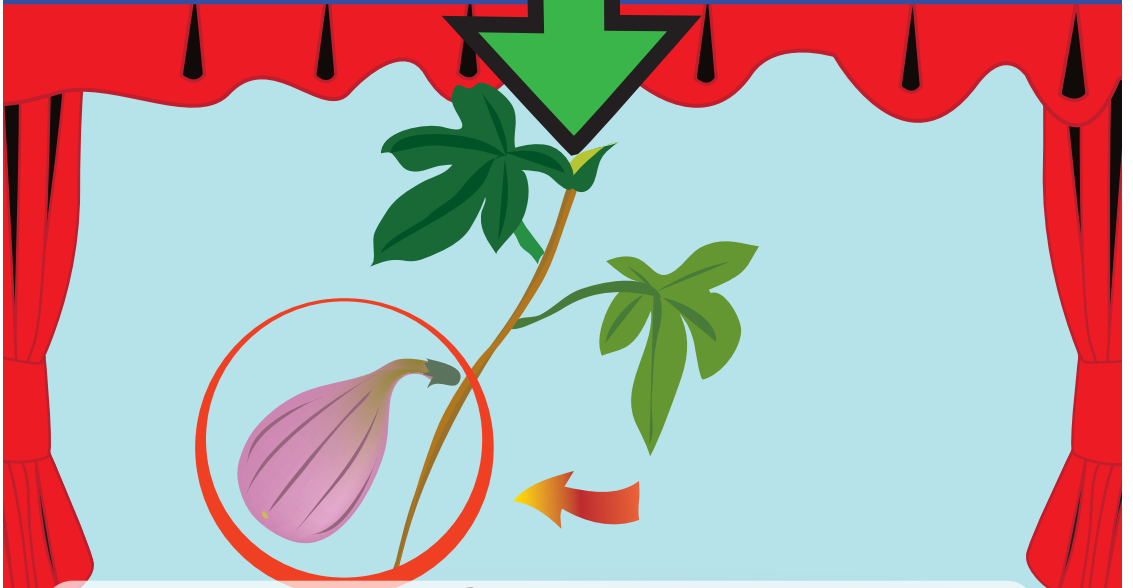
kid



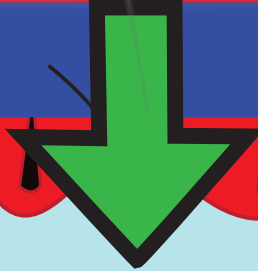
lid



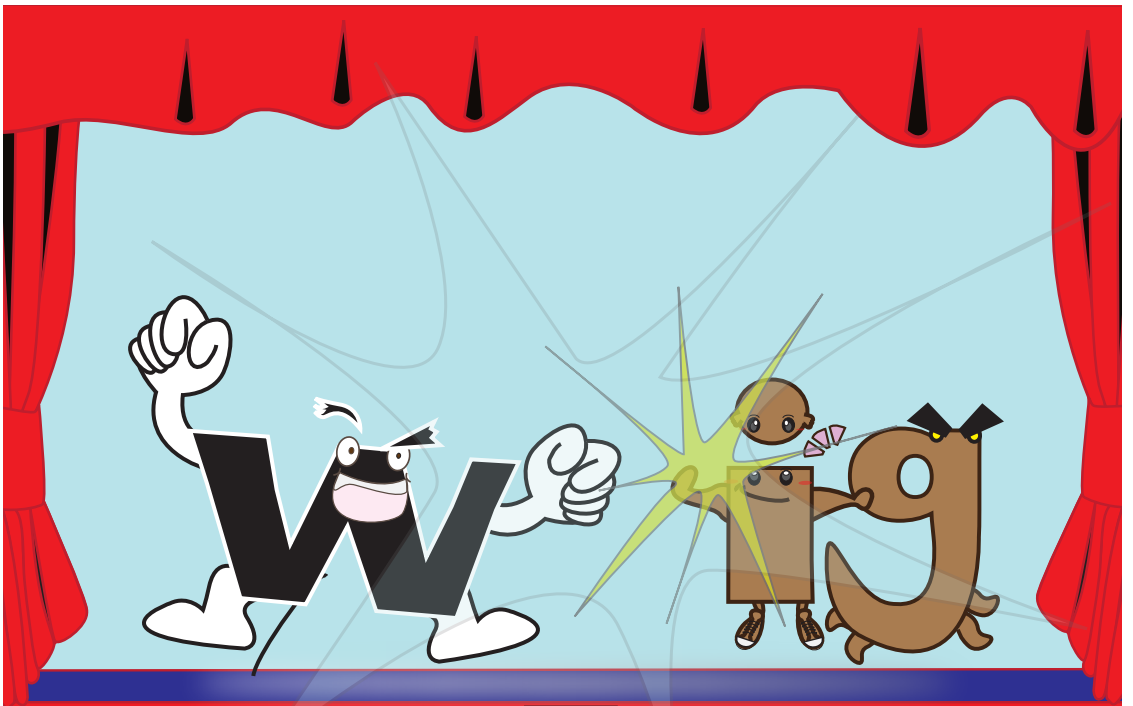


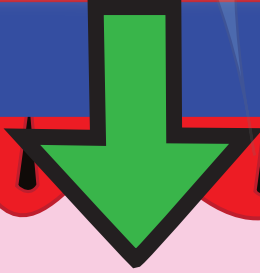
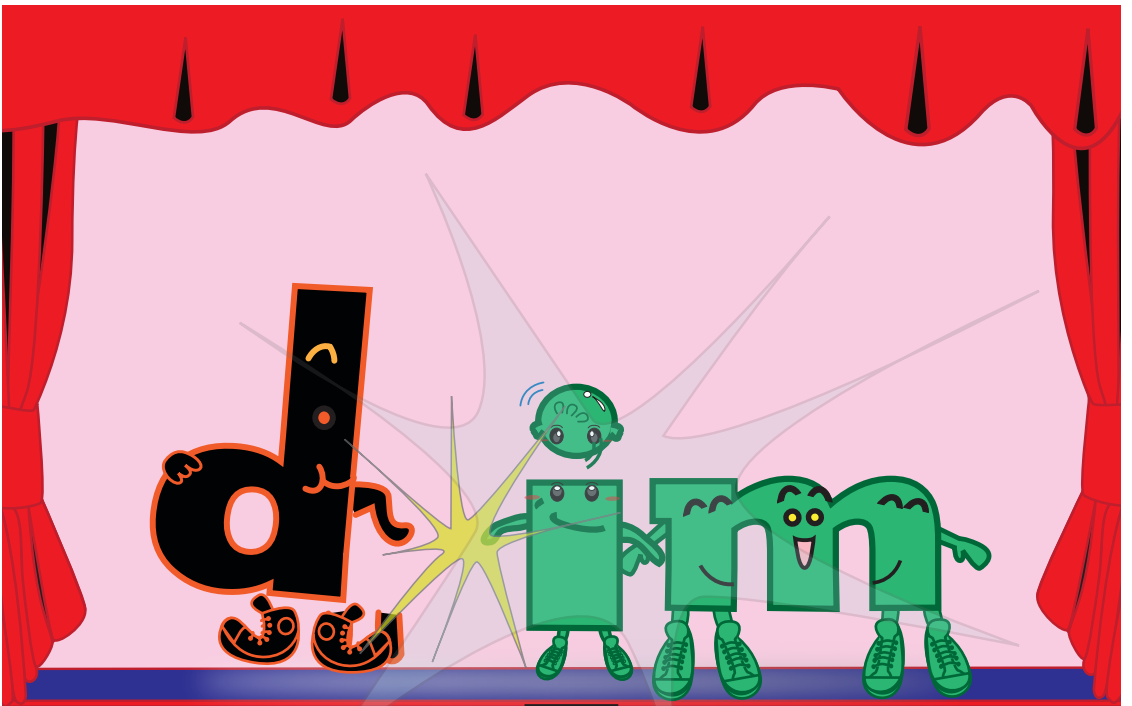


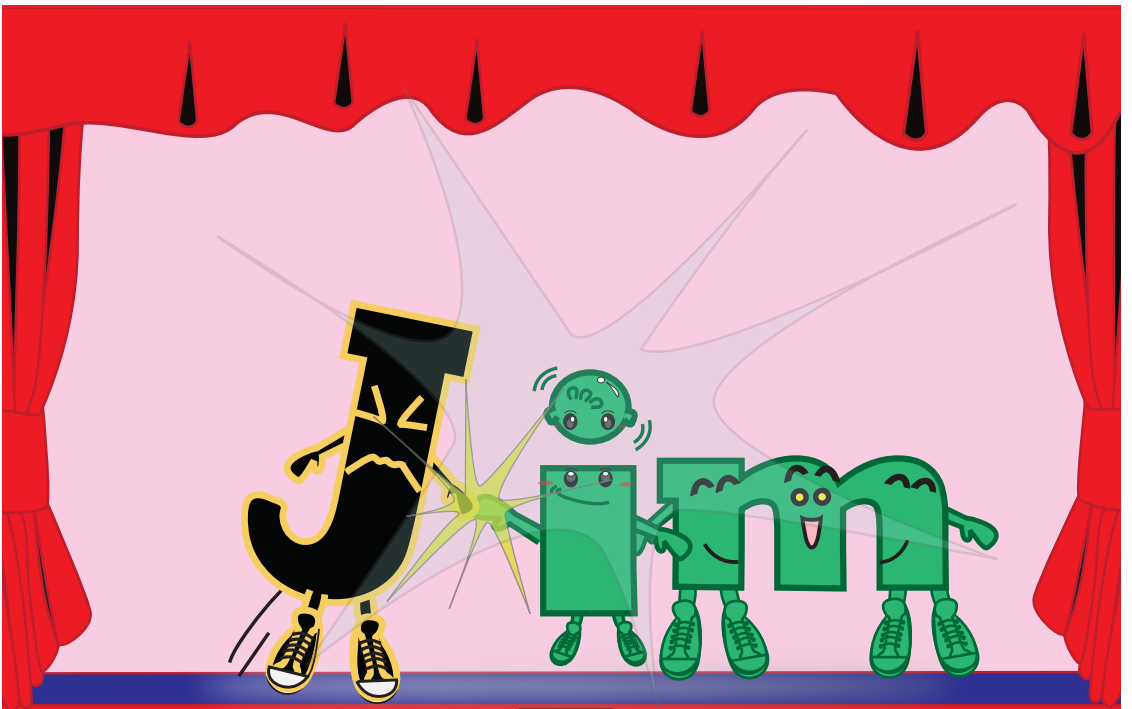
fig



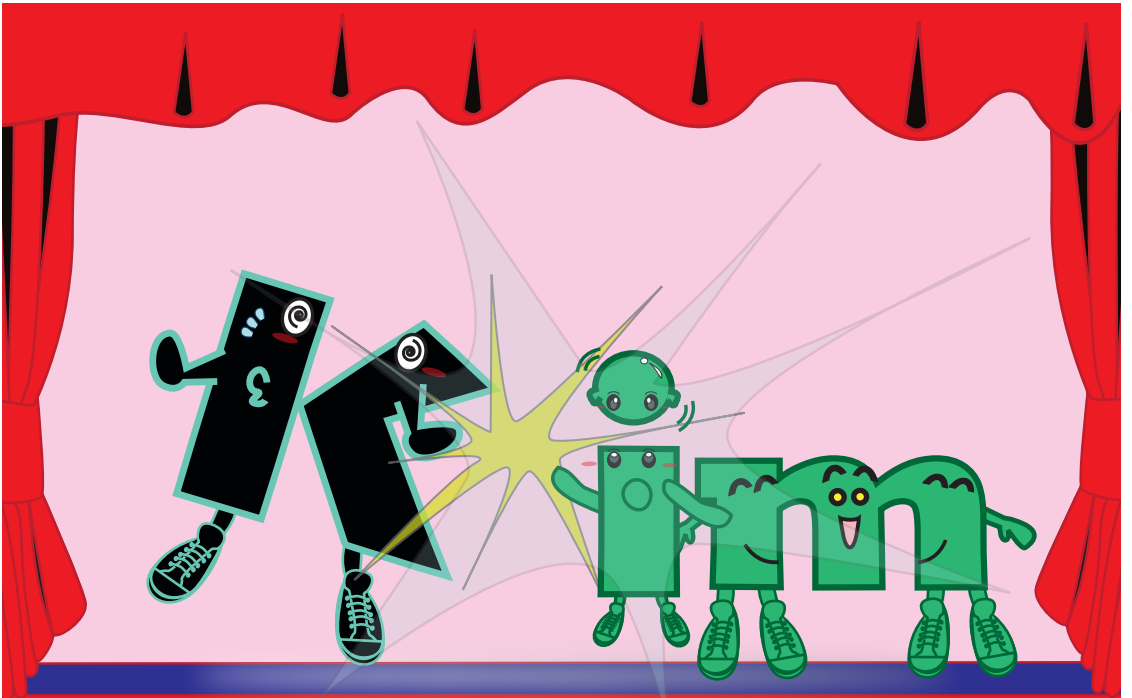
pig

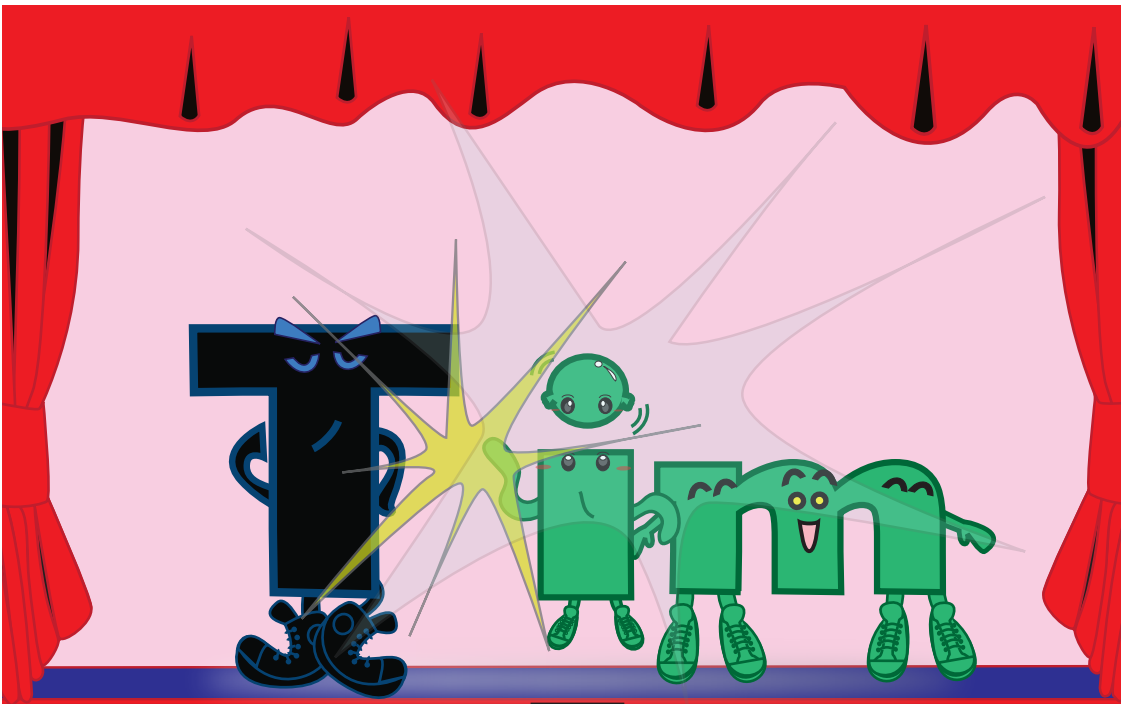






Jim





ib

bib

rib

nib

id

kid

lid

ig

big

dig

fig

pig

wig

im

dim

Jim

Kim

Tim

...and the fact that the system is not yet fully operational, the Commission has decided to postpone the start of the programme until 1992.

The Commission has also decided to postpone the start of the programme until 1992.

The Commission has also decided to postpone the start of the programme until 1992.

The Commission has also decided to postpone the start of the programme until 1992.

The Commission has also decided to postpone the start of the programme until 1992.

The Commission has also decided to postpone the start of the programme until 1992.

The Commission has also decided to postpone the start of the programme until 1992.

The Commission has also decided to postpone the start of the programme until 1992.

The Commission has also decided to postpone the start of the programme until 1992.

The Commission has also decided to postpone the start of the programme until 1992.

The Commission has also decided to postpone the start of the programme until 1992.

The Commission has also decided to postpone the start of the programme until 1992.

The Commission has also decided to postpone the start of the programme until 1992.

The Commission has also decided to postpone the start of the programme until 1992.

The Commission has also decided to postpone the start of the programme until 1992.

The Commission has also decided to postpone the start of the programme until 1992.

The Commission has also decided to postpone the start of the programme until 1992.

Big Book 11 Souperman	Week 1	'ed' 'eg' Book
	Week 2	'em' 'en' Book
	Week 3	'ib' 'id' 'ig' 'im' Book
	Week 4	'in' 'it' 'ix' Book

Native-speaking English Teacher Section
Curriculum Development Institute
Education Bureau
Hong Kong Special Administrative Region

